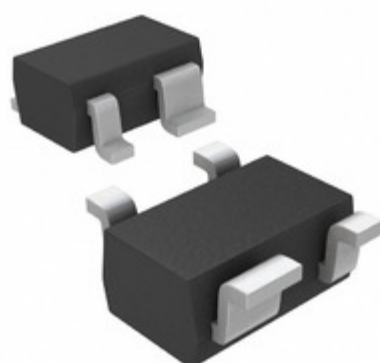


MAX6384XS16D1+T



Part Number: [MAX6384XS16D1+T](#)
Manufacturer: [Maxim Integrated](#)
Description: IC MPU/RESET CIRC 1.58V SC70-4
Data sheet: [Part Numbering System](#)
[MAX6381-90](#)

RoHS Status: Lead free / RoHS Compliant
Ship From: Hong Kong
Shipment Way: DHL/Fedex/TNT/UPS/EMS

Images are for reference only.
 See Product Specifications for product details.
Buy MAX6384XS16D1+T with confidence from Component-World.HK, 1 Year Warranty

[Request For Quotation](#)

PRODUCT PARAMETER

Part Number	MAX6384XS16D1+T	Manufacturer	Maxim Integrated
Description	IC MPU/RESET CIRC 1.58V SC70-4	Lead Free Status / RoHS Status	Lead free / RoHS Compliant
Quantity Available	5724 pcs	Data sheet	Part Numbering System MAX6381-90
Category	Integrated Circuits (ICs)	Voltage - Threshold	1.58V
Type	Simple Reset/Power-On Reset	Supplier Device Package	SC-70-4
Series	-	Reset Timeout	1 ms Minimum
Reset	Active Low	Packaging	Tape & Reel (TR)
Package / Case	SC-82A, SOT-343	Output	Push-Pull, Totem Pole
Operating Temperature	-40°C ~ 125°C (TA)	Number of Voltages Monitored	1
Mounting Type	Surface Mount	Moisture Sensitivity Level (MSL)	1 (Unlimited)
Lead Free Status / RoHS Status	Lead free / RoHS Compliant	Detailed Description	Supervisor Push-Pull, Totem Pole 1 Channel SC-70-4
Base Part Number	MAX6384		

Component-World.com is a Reliable Stocking Distributor of Electronic Components. We specialize in all Maxim Integrated series electronic components. We have 5724 pieces of Maxim Integrated MAX6384XS16D1+T in stock available now. Request a quote from electronics components distributor at Component-World.com, our sales team will contact you within 24 hours.

RFQ Email: info@Components-World.com

RELATED PRODUCTS

	Part#: MAX6384XS20D1+T Description: IC MPU/RESET CIRC 2.00V SC70-4	Manufacturers: Maxim Integrated	RFQ
	Part#: MAX6384LT24D3+T Description: IC MPU/RESET CIRC 2.40V 6-UDFN	Manufacturers: Maxim Integrated	RFQ
	Part#: MAX6384LT22D3+T Description: IC MPU/RESET CIRC 2.19V 6-UDFN	Manufacturers: Maxim Integrated	RFQ
	Part#: MAX6383XR46D7+T Description: IC MPU/RESET CIRC 4.63V SC70-3	Manufacturers: Maxim Integrated	RFQ
	Part#: MAX6384LT25D3+T Description: IC MPU/RESET CIRC 2.50V 6-UDFN	Manufacturers: Maxim Integrated	RFQ
	Part#: MAX6384XS16D3-T Description: IC MPU/RESET CIRC 1.58V SC70-4	Manufacturers: Maxim Integrated	RFQ
	Part#: MAX6384LT28D2+T Description: IC MPU/RESET CIRC 2.80V 6-UDFN	Manufacturers: Maxim Integrated	RFQ
	Part#: MAX6384LT16D1+T Description: IC MPU/RESET CIRC 1.58V 6-UDFN	Manufacturers: Maxim Integrated	RFQ
	Part#: MAX6384XS23D3+T Description: IC MPU/RESET CIRC 2.31V SC70-4	Manufacturers: Maxim Integrated	RFQ
	Part#: MAX6384LT23D1+T Description: IC MPU/RESET CIRC 2.31V 6-UDFN	Manufacturers: Maxim Integrated	RFQ
	Part#: MAX6384LT29D1+T Description: IC MPU/RESET CIRC 2.93V 6-UDFN	Manufacturers: Maxim Integrated	RFQ
	Part#: MAX6384XS22D3+T Description: IC MPU/RESET CIRC 2.19V SC70-4	Manufacturers: Maxim Integrated	RFQ
	Part#: MAX6384XS17D3+T Description: IC MPU/RESET CIRC 1.67V SC70-4	Manufacturers: Maxim Integrated	RFQ
	Part#: MAX6384LT16D3+T Description: IC MPU/RESET CIRC 1.58V 6-UDFN	Manufacturers: Maxim Integrated	RFQ
	Part#: MAX6384XS17D1+T Description: IC MPU/RESET CIRC 1.67V SC70-4	Manufacturers: Maxim Integrated	RFQ
	Part#: MAX6384XS17D3-T Description: IC MPU/RESET CIRC 1.67V SC70-4	Manufacturers: Maxim Integrated	RFQ
	Part#: MAX6384XS16D1-T Description: IC MPU/RESET CIRC 1.58V SC70-4	Manufacturers: Maxim Integrated	RFQ
	Part#: MAX6384XS16D3+T Description: IC MPU/RESET CIRC 1.58V SC70-4	Manufacturers: Maxim Integrated	RFQ
	Part#: MAX6384LT26D3+T Description: IC MPU/RESET CIRC 2.63V 6UDFN	Manufacturers: Maxim Integrated	RFQ
	Part#: MAX6384XS22D3-T Description: IC MPU/RESET CIRC 2.19V SC70-4	Manufacturers: Maxim Integrated	RFQ

Related keywords for MAX6384XS16D1+T

Maxim Integrated MAX6384XS16D1+T	MAX6384XS16D1+T distributor	MAX6384XS16D1+T supplier	MAX6384XS16D1+T price
MAX6384XS16D1+T download datasheet	MAX6384XS16D1+T datasheet	MAX6384XS16D1+T stock	buy MAX6384XS16D1+T
Maxim Integrated MAX6384XS16D1+T			